



Computer generated image

Plots 1 | 2* | 3 | 4* | 6 | 7* | 13 | 14*

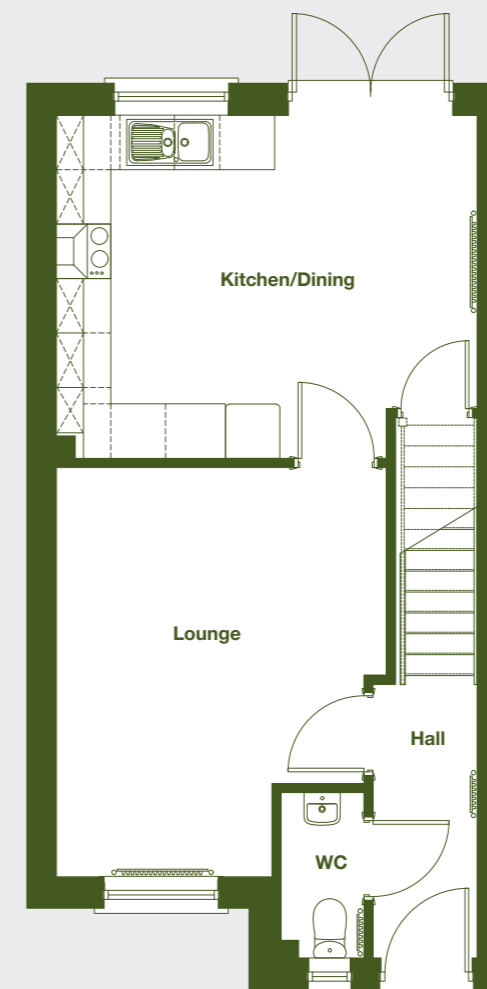
3 BEDROOM SEMI-DETACHED HOUSE

84.8m²

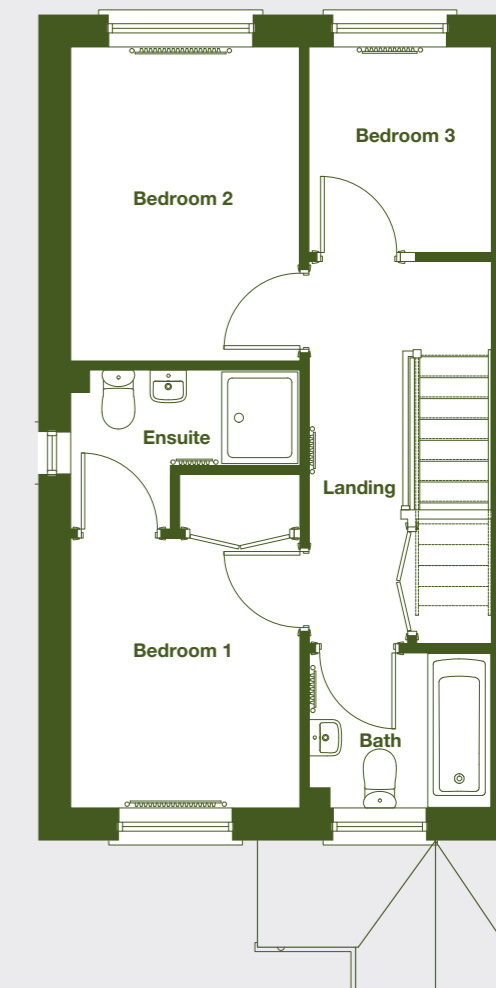
Comprising of entrance hall, kitchen/dining room, lounge, W/C, master bedroom with en-suite, second bedroom, third bedroom and bathroom.

The dimensions stated are approximate and the precise measurements may vary. Kitchen layouts are indicative and may change. *Indicates that this plot is handed.

Ground floor



First floor



Ground Floor

Kitchen/dining	3.82m x 4.68m
Lounge	4.54m x 3.67m
WC	1.86m x 2.19m

First Floor

Bedroom 1	3.01m x 2.56m
Bedroom 2	3.49m x 2.56m
Bedroom 3	2.30m x 2.04m
Bathroom	1.74m x 2.04m
En-suite	1.77m x 2.56m

Please speak to a sales consult for more information.

Phone 0300 456 0522

Email sales@guinness.org.uk