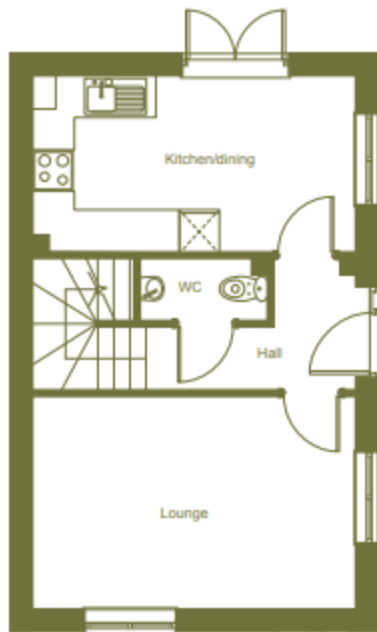
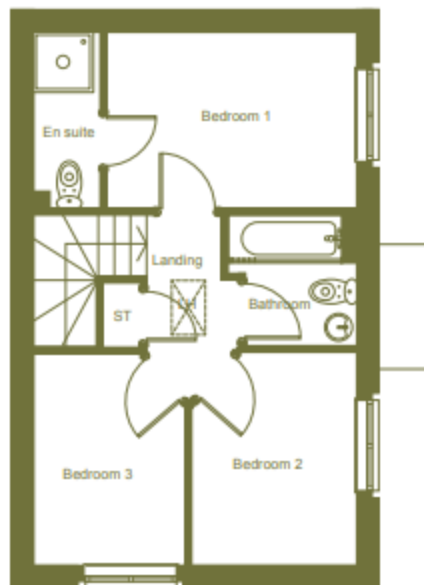


3 Bedroom House | 78m²

The Molybdenum



Ground floor



First floor

Plot 77

Kitchen/dining	2.68m	x	4.89m
Lounge	3.23m	x	3.76m
Bedroom 1	2.68m	x	3.78m
Bedroom 2	3.23m	x	2.50m
Bedroom 3	3.21m	x	2.32m

Three bedroom house complete with open plan kitchen/dining area with french doors to rear garden, lounge, WC, storage, two bedrooms, a family bathroom, and a further master bedroom with an en suite.

*Indicates that this plot is handed. **Window layout differs for some plots. Please speak to a sales consultant for more information.