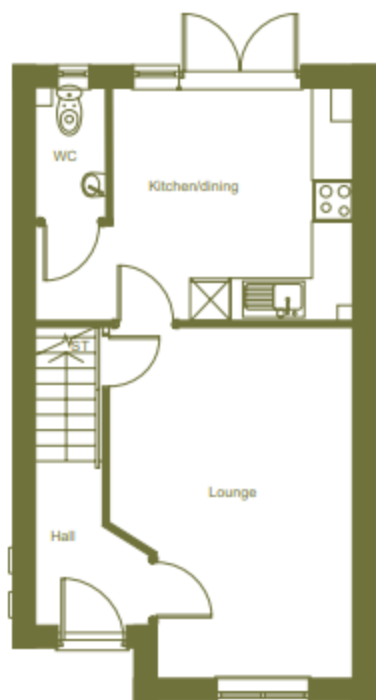
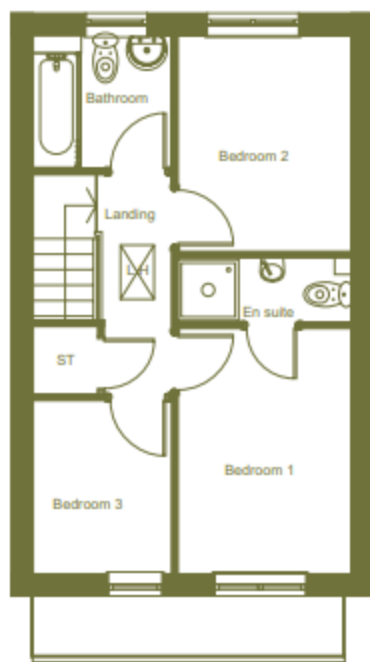


3 Bedroom House | 78m²

The Nickel



Ground floor



First floor

Plots 43, 44, 45, 47, 48, 50, 51, 52, 53, 56, 57, 58, 60, 61, 62, 77, 81, 82, 83, 84, 85, 86, 87, 88, 94, 95, 96, 97, 98, 99, 100, 101, 106, 107, 108, 109, 124, 125, 126, 127, 128, 129, 130, 131, 132, 135, 136

Kitchen/dining	4.79m	x	3.50m
Lounge	5.26m	x	3.67m
Bedroom 1	3.68m	x	2.62m
Bedroom 2	3.25m	x	2.62m
Bedroom 3	2.61m	x	2.01m

Three bedroom house complete with open plan kitchen/dining area with french doors to rear garden, lounge, WC, storage, two bedrooms, a family bathroom, and a further master bedroom with an en suite.

*Indicates that this plot is handed. **Window layout differs for some plots. Please speak to a sales consultant for more information.